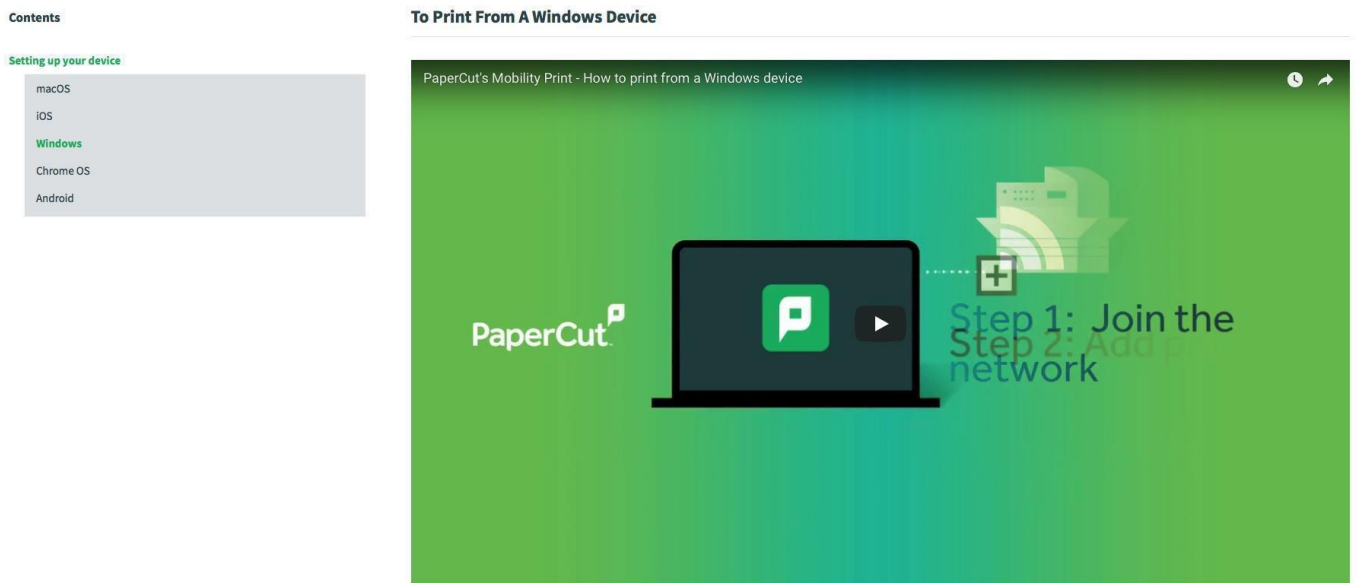


# PaperCut Mobile and Bring Your Own Device (BYOD) Printing for Windows Device

PaperCut Mobility Printing allows users to print from whatever bring your own device (BYOD) or mobile device at their disposal.

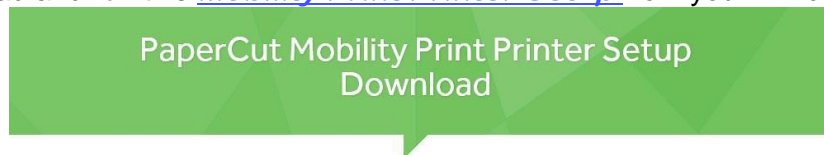
**Important: Make sure your Windows device is connected to your organisation's (i.e. Nelson Mandela University) network.**

In order to setup and print from your Windows device watch a short instructional video by clicking the following [link](#).



Alternatively, follow the basic instructions below to install the Mobility Print app.

1. Download and **run** this [Mobility Print Printer Setup](#) from your Windows device

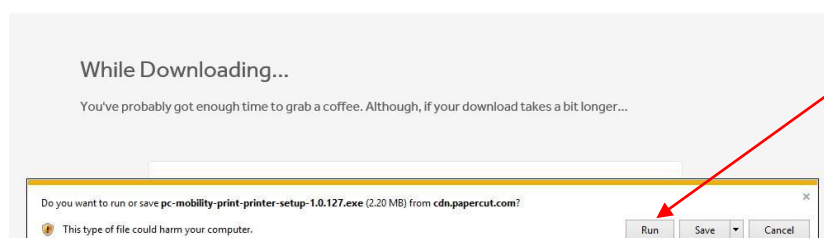


Thanks for downloading!

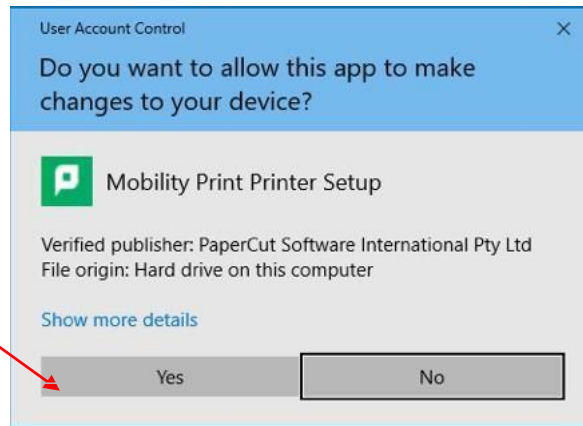


Your download will begin in a moment.

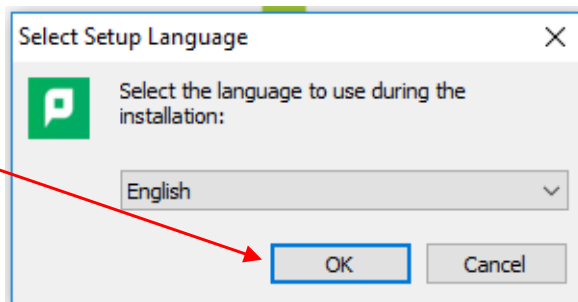
If it doesn't, [click here](#).



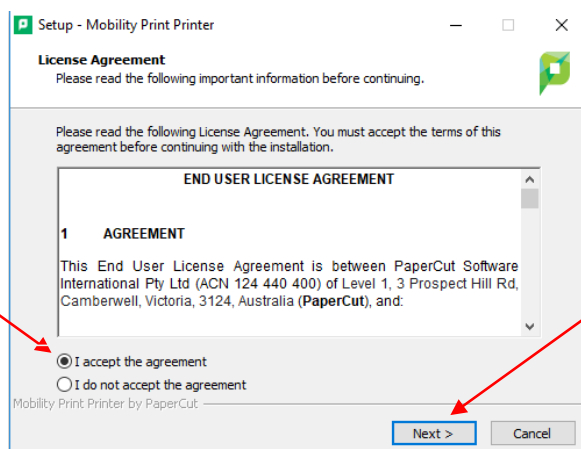
2. Select **YES** below



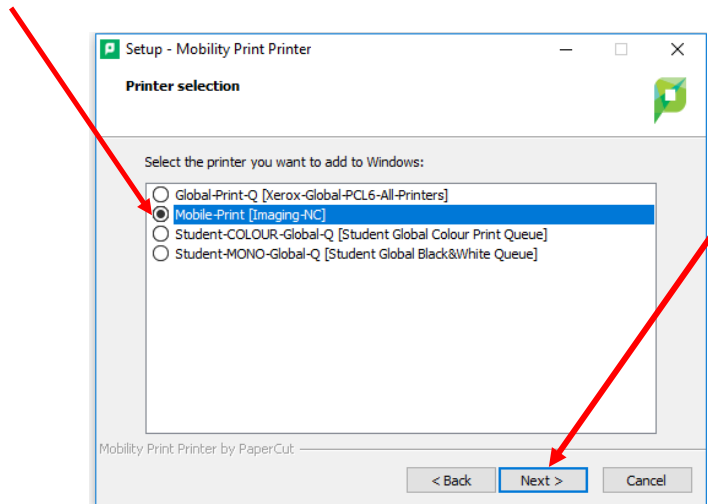
3. Select **OK**.



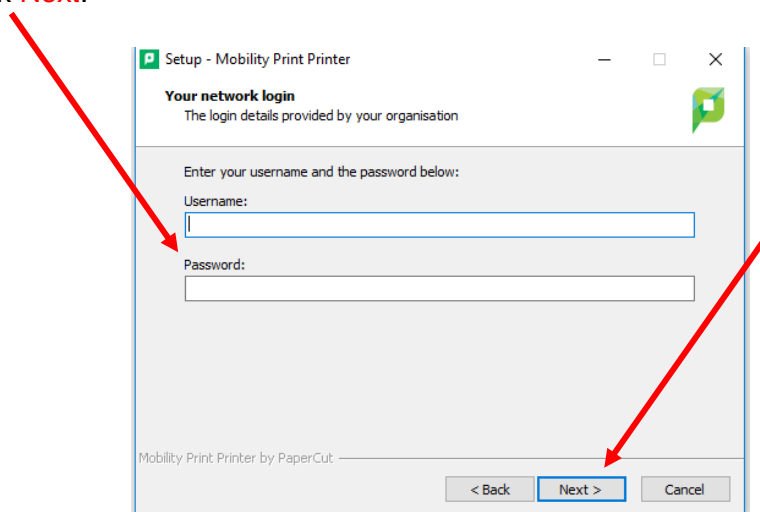
4. Select **Accept** and click **Next**.



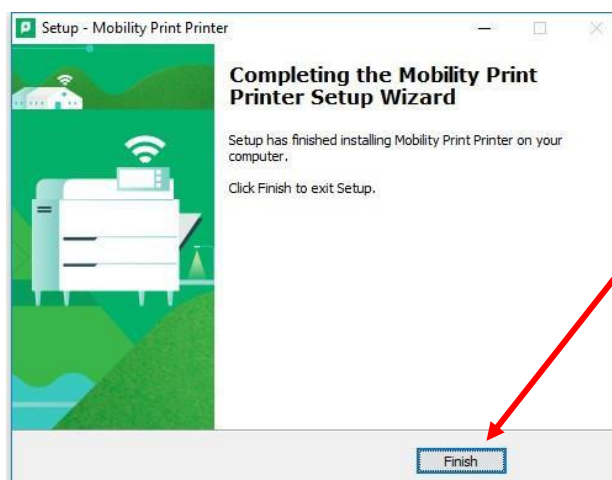
5. Select the **Printer** i.e. Mobile-Print and click **Next**



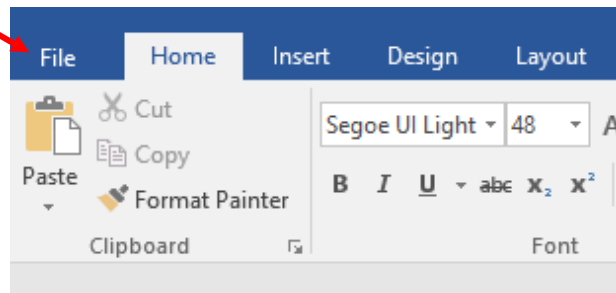
6. You will be prompted to enter your Nelson Mandela University username and password. Click **Next**.



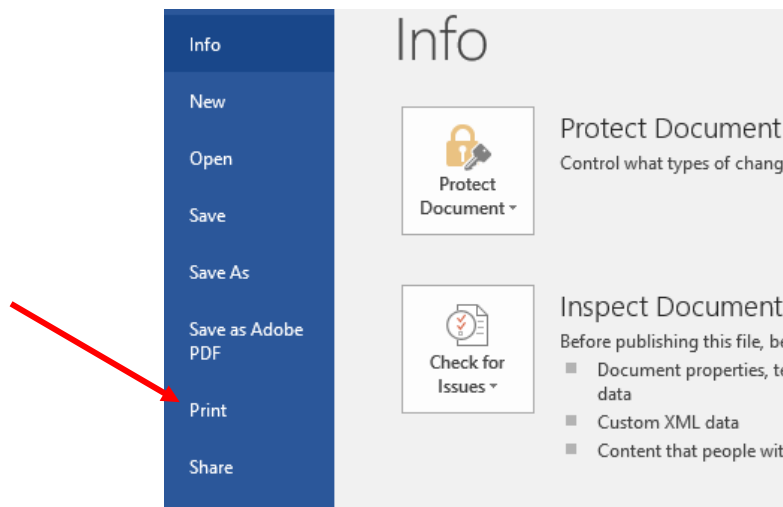
7. Click **Finish**. The device is now ready to print.



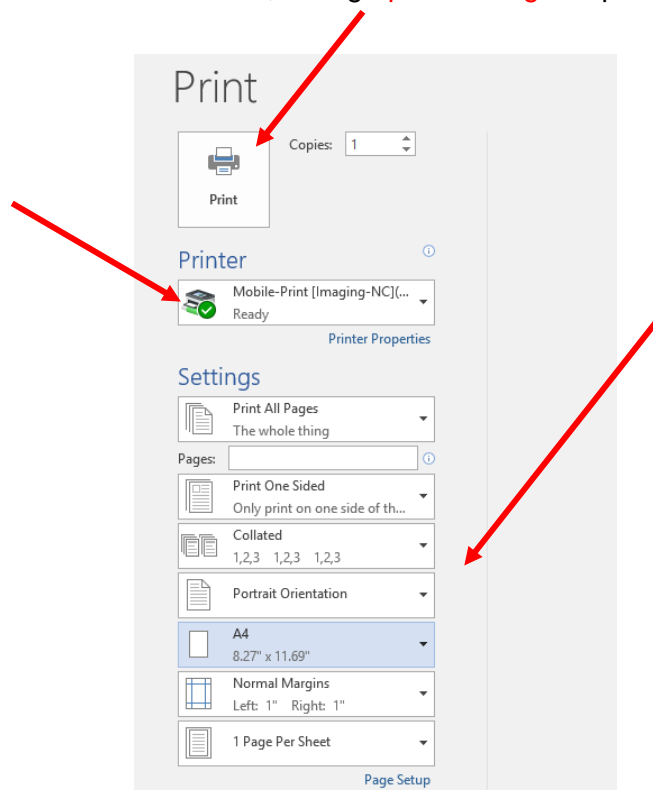
8. Select the App specific **File** command



9. Select **Print**



10. Select the **Printer** i.e. **Mobile-Print**, change **print settings** as per document requirements and click **Print**.



11. **Release your print job/s** at a multifunction device (printer/copier) for printing.

12. If you would like to **view your pending print jobs and printing balance** click this [link](#).